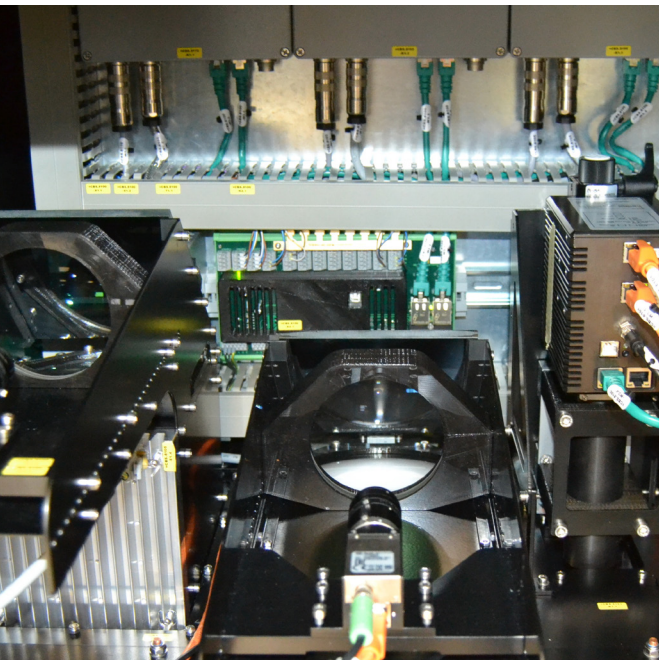


FleXinspect B Generation III

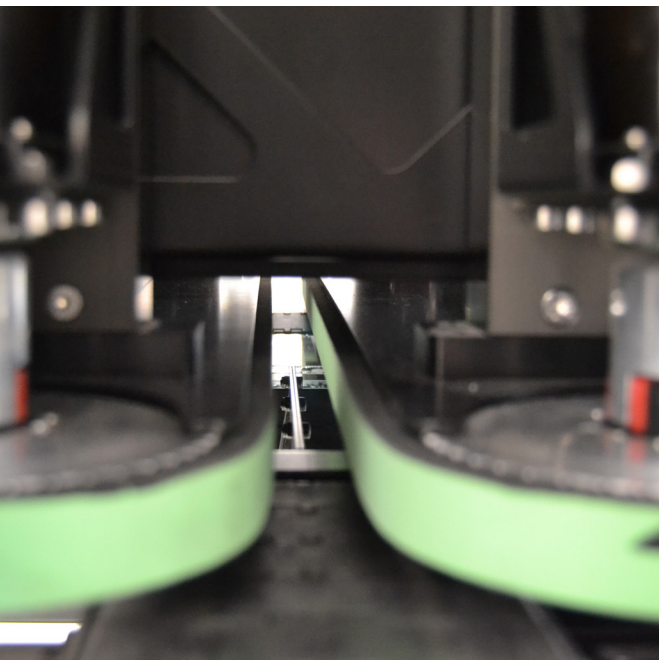


Comprehensive top and bottom inspection with mold correlation options

- A simple and easy to configure platform that easily allows the configuration of multiple machines at once, the FleXinspect B Generation III provides unmatched automation for glass makers.
- Job portability and repeatability
- Motorized adjustments
- Touch free optics



FlexInspect B Generation III optical cabinet



FlexInspect B Generation III ware handler

Convenience through automated settings

The FlexInspect B Generation III is a reliable and uniquely configurable platform that easily allows inspection functionality to be added as required. All adjustments are fully motorized providing unmatched repeatability and shortest job change times giving glassmakers flexibility and value.

High-resolution cameras and special optics allow inspection of the complete bottom area with advanced algorithms including stipple and baffle filters (also for non-round). When equipped with a mold reading option, the FlexInspect B Generation III mold-correlates results from all installed inspections.

Job portability and repeatability

- Jobs can be programmed on one machine and automatically set on the rest of your machines

Motorized adjustments

- Once a job is selected all inspection machines automatically adjust to suit that container

Touch free optics

- Sealed cameras reduce the chance of damage and the need for cleaning

Features

- Quick job change for new articles, fully automatic recall of previous jobs, no manual adjustments
- Dust proof optical assemblies (cameras & lights) and air conditioned electrical enclosures,
- Cavity correlation of all defects
- Traceability of change (who, what, when)
- Independent belt position for tapered ware
- 4 - Servo driven carry belts
- Integrated 21.5" touch display
- 5 megapixel camera resolution - Standard

Ware Range

- Height: 40mm-440mm
- Body Diameter: 15mm-160mm
- Finish Diameter: 4.5mm-120mm
- Tall ware up to 600mm - available on request

Available Inspections

- Base Inspection
- Base Stress
- Sealing Surface Finish 1 (reflective light / light field)
- Sealing Surface Finish 1 (reflective light / light field) with Wire Edge
- Sealing Surface Finish 2 (incident light / dark field)
- Vision mold number reader in base station (heel codes and base codes - top down)
- Smart vision mold number reader (seven segment base code - top down)
- U-VMNR Universal Vision Mold Number Reader (heel codes - bottom up)

Typical Production Speeds

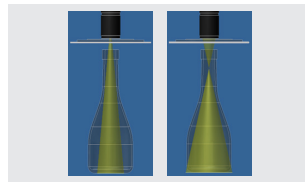
Type	Production Speed	Burst Speed
Beer	300-500	600
Wine	250-400	450
Baby Food	300-500	600
Non Round	100-300	N/A

Conveyor Speed: Max 1m/s



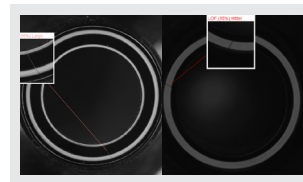
Scout Technology

FleXinspect is powered by SCOUT technology that enables new levels of automation, performance and simplicity. SCOUT is the foundation that will support future advancements in hollow glass inspection.



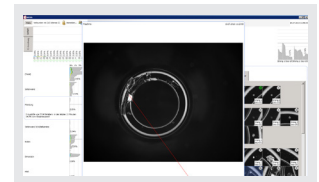
FleXinspect B Generation III Base/Base Stress

Base camera with special lens and pre-focal point ensures 100% coverage of the base area.



FleXinspect B Generation III Finish

Two inspection methods (reflection and incident light) guarantee the best inspection results. Optionally with enhanced Wire Edge.



FleXinspect B Generation III Statistics

Detailed statistic for all inspections.

Specifications

Power requirements

240VAC 1L N and 16Amp fuse

NOTE: Transformer required for any other voltage.

Air requirements

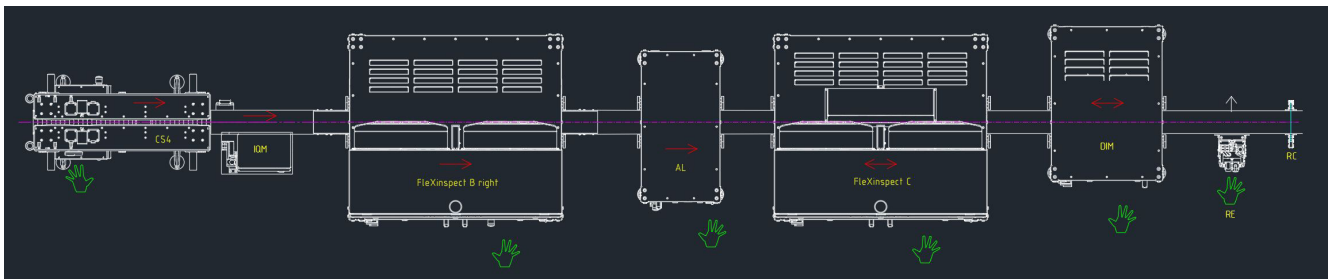
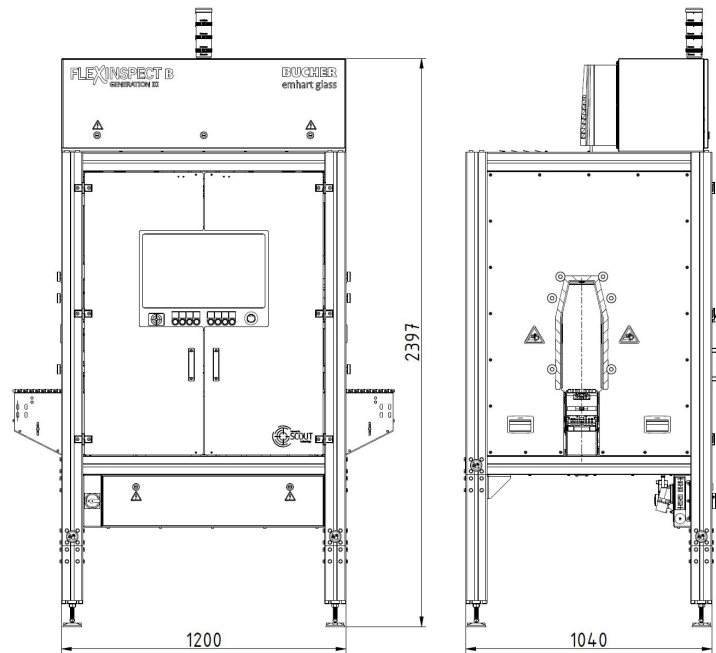
Minimum 3.5 bar nominal [50 psi]

Maximum 0.8 to 0.85 m3/minute

Environmental considerations

Temperature Max. 50 °C [122 °F]

Relative humidity Max. 95% relative humidity
(non-condensing)



Specifications are subject to change. Actual performance depends on specific application, container size, and line speed. Dimensions represent nominal machine size and are not for installation purposes.

Bucher Emhart Glass
 Hinterbergstrasse 22
 CH-6312 Steinhausen
 Tel. +41 41 749 42 00
 Fax +41 41 749 42 71
 webmaster@bucheremhartglass.com
 www.bucheremhartglass.com

Bucher Emhart Glass is a company with a rich heritage and a tradition of excellence that we are proud to continue today. Our founders laid the foundations for automation in glass manufacturing, setting us on a course of marketleading innovations that has lasted for over a century. We created the industry-standard IS machine and have repeatedly delivered game-changing innovations in gob forming, container forming, automation, control and inspection.

Growing strategically through new branches, alliances and acquisitions, we have developed into a true global enterprise with the power to serve customers around the world with speed, responsiveness and understanding. Our global footprint provides the very best in established expertise, economical manufacturing, and hands-on client support.

Our work is underpinned by a profound and unshakeable belief in glass as a packaging material. And we back up that belief with investment in R&D. Driven by our clients' priorities, we continue to work towards new milestones in production speed, product quality, testing precision, and glass container strength. The ideas we have today will deliver the improvements of tomorrow.